



"Change is the essential process of all existence" Spock - Star Trek

## Next Generation Lighting

As they have been for the last 20+ years, Modus people were busy exploring this year's Light + Build Fair in Frankfurt in April. Every two years this massive event showcases the very best lighting design and research & development efforts from the international community.

This year was seen to be a pivotal year in the lighting design and application market as the lighting world rapidly changes from analogue to digital technology.

The uptake of LED luminaires in both interior and exterior application was nothing short of remarkable, with some companies only exhibiting LED product. With the amount of investment from all corners of the globe it is clear that LED will be a major lighting force in New Zealand very shortly.

Whilst the initial costs for quality LED luminaires are still at premium levels, the inevitable competitive market forces plus the volume economies of electronics production will soon drive both initial project costs and lifecycle costs to very attractive levels.

A key discussion point at L+B technology seminars was how to differentiate between the messages of conservative and informed LED suppliers from the excessively optimistic and the downright deceptive. This is an ongoing task, and to date there is an absence of an adequate international standards framework.

Another noteworthy development was the maturing of lighting control systems into a fundamental necessity to get the best performance from lighting installations. No longer are lighting controls only about dimming. Colour temperature controls and the opportunity for workplace performance improvements are now practical and cost effective. Control systems including energy metering, carbon accounting, predictive maintenance management and operating cost control are all possible and available for informed specifiers.

The "Luminale" exhibition around the CBD of Frankfurt sought to showcase the creative and technological expertise of international lighting designers and lighting artists. This event was spread over the week of the Fair and created temporary magical lighting vistas around the streets and buildings of the city. Once again, digital solutions stole the show with programmable RGB LED systems totally to the fore.

Modus General Manager, Chris Byrne, sees big changes about to happen in the marketplace both internationally and in New Zealand with the need for very different approaches required for digital lighting design and procurement.

If you have any queries around emerging lighting technology, luminaire control or lighting practice, or you would like to discuss any projects, please don't hesitate to give us a call - we have a fantastic team who will be able to assist you.



## Modular Airport. Frankfurt Light + Build 2010

A product display stand? How dull..... The crazy kids at Modular Lighting Instruments built an airport instead.

At their airport Modular showcased a range of fantastic new technology including LED developments and some rather exciting OLED creations. They also included some other new profile systems and luminaires that utilize more conventional lamp sources, but all had a very distinct Modular aesthetic. Definitely one of the highlights at L+B, Modular proved that they remain one of the most vital manufacturers of architectural luminaires in the international market with inimitable design that utilizes the best technology available.

Modular released a small "teaser" edition of their new main catalogue at L+B, with a limited edition release due out soon. You will definitely want to try to get your hands on a copy of this, not only does it contain entire ranges of new product in the typical modular aesthetic - but also showcases a huge range of international interiors from the vanguard of contemporary design. Check the modular website for a sneak peak - [www.supermodular.com](http://www.supermodular.com)



## Spock.

Up until now interior LED lighting has generally not been able to meet the illumination requirements of architects, designers and end users. Retro-fit and patchwork LED solutions have been predominant in interior LED luminaires.....

*SPOCK is something different - a fitting actually designed as an LED luminaire.*

**Comparable Homogenous Light.** With a luminous intensity of up to 1000lumens the light output of the SPOCK is comparable to the widespread classic halogen spot of 50-75Watts. 3000K OR 4000K.

**Beams.** For the optimal light experience in the home or office SPOCK is available in either medium or wide beam. Light is focused via a lens into a powerful beam with an angle of 32deg or 56deg.

**Thin Housing.** The thin LED housing with a cross section of barely 12.5mm contains 16 high quality LEDs aligned flat toward the outer edge of the circumference so that they are concealed from the eye.

**Foot, Track & Wall.** All three versions of the fitting are available in Black and White. The whole base of the fixture is attached to the surface in all versions so that all elements are neatly concealed.

**Invisible LED Source.** The detailed position of each of the LED sources underneath an engineered mirror reflector ensures that the diode itself is invisible.

**No Visible Cable or Wiring.** The ingenious design of the SPOCK luminaire has been refined to the last detail with not a single lead showing - either on the rotating LED disc incorporated into the attractive chrome plated ring hinge, or at the mains connection at the base of the fitting.

**Photo-biological Safety.** Thanks to its large emitting surface the discs lighting is less intense and therefore not harmful to the eye, a problem that has frequently plagued previous LED sources.





next generation product

## Penrose Reception, Auckland.

Feature Product Range: Klik & Modus

Organic curves soften the appearance of the Modus Pico down light. Finished in Modus textured white powdercoat, the luminaire is unobtrusive when set into a white ceiling as it blends in with painted finishes. The deep recess of the lamp into the fitting works to reduce visual glare. Available with either halogen or MR16 Metal Halide lamps these fittings are suitable for almost any commercial interior and retail application.

In this commercial reception area the soft lines of the Modus Pico down light are contrasted with the Klik 230 Beam pendant over the reception desk. This custom manufactured pendant has been designed to give a soft indirect up light that washes over the ceiling as well as complete task lighting down onto the work surface below.



## Victoria St Lobby, Auckland.

Feature Product Range: Modus

Re-designing the interior of a classic mid century modern building requires a delicate hand. Using references to period interiors alongside contemporary detailing, the architects have created a stunning and welcoming lobby space.

Modus manufactured a custom designed BeamA fitting 9M long to the architect's specification in order to illuminate the main portion of the lobby. The finished suspended pendant floats below the lineal timber paneling with energy efficient IRC Halogens creating soft pools of light on the black polished stone floor.

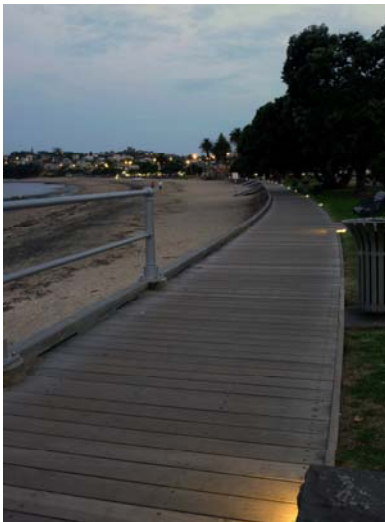
Situations like this don't always lend themselves to an off the shelf solution so if you would like a custom luminaire for a current project, or even just a variation on one of our standard luminaires just let us know. Because we manufacture in Auckland our consultants and design team have the capabilities to help you develop a unique lighting solution for any interior.

## Inner City Camping, Wellington.

Feature Product Range: We-ef

Within easy reach of the stadium for the pending World Cup and next year's Sevens, Wellington now has a new inner city camping site. An exciting new addition to the waterfront it is a close walk to restaurants, trains, bars and of course the Cook Strait ferries.

The campground features the We-ef SBL 440 Pole Mounted Luminaires (with a motor home power socket at the bottom of the pole - yes, everything was thought of!). And also We-ef QRI 304 Recessed Wall Lights in purpose built concrete blocks and We-ef FCL122 Surface Mounted Luminaires.



## St Heliers Boardwalk, Auckland.

Feature Product Range: We-ef

Now that stage two of St Heliers boardwalk is completed the beach front area is more inviting for walkers and joggers alike. We-ef luminaires provide lighting along the boardwalk for orientation, in addition to a general discrete ambient light for those who wish to sit on the park benches and look out to the Hauraki Gulf.

The main source of lighting for the new timber boardwalk is the We-ef EFC 120 single side marker luminaire with a 35W metal halide lamp. These EFC 120 luminaires are engineered to endure, thereby minimizing the need to replace or recycle them for many years. This is especially important for applications such as this by the sea.

We-ef tightly control all materials and production steps under the ISO9001 quality assurance. This includes ongoing spectrometer analysis of the aluminum alloy used, daily checks of chemicals concentration in the pre-treatment phase, quality control checks on finished parts and critically - up to 2,000 hours salt spray exposure tests.



## New Premises for Modus Architectural Lighting Auckland

### The Light Box - 8 Canada Street, Auckland CBD

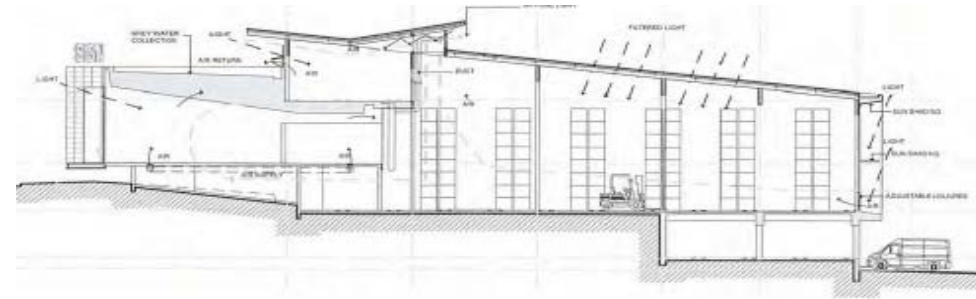
Everybody at Modus is starting to get excited that we are finally moving from St Lukes, and putting the last memories of the fire behind us. The new premises at 8 Canada Street is the complete antithesis of our current 'temporary residence'.

Designed by Wingate and Farquhar, it was described in Pro-design Magazine as a 'Rare Beast'.

Boasting everything that is good about sustainability from recycled materials, solar heating and recycled water, to the stunning opaque 'Light Box' of the Auckland sales office and a 10,000 sq ft factory less than 50m from Auckland's Queens Street, it will present Modus in a 'whole new light' (pun intended!)

Relocating to the central city in the heart of the design quarter ensures that we are close to our major clients and in touch with the larger design community.

Stop and see us if you are passing, otherwise look up (carefully please!) from you car as you drive along spaghetti junction at night to see the illuminated light box on the Karangahape Rd ridge.



**HEAD OFFICE & MANUFACTURING  
AUCKLAND**

Modus Lighting  
8 Canada St, Newton  
Auckland 1010

PO Box 68341  
Newton 1145  
Auckland

Phone + 64 9 352 9888  
Fax + 64 9 352 9889



WELLINGTON  
Modus Lighting  
Phone +64 4 499 0933  
Fax +64 4 499 0934

TAURANGA  
Modus Lighting  
Phone +64 7 571 3945  
Fax +64 7 571 3945

CHRISTCHURCH  
Mark Herring Lighting  
Phone +64 3 365 6020  
Fax +64 3 365 6010

AUSTRALIA  
JSB Lighting  
Phone +61 2 9571 8800  
Fax +61 2 9571 8811